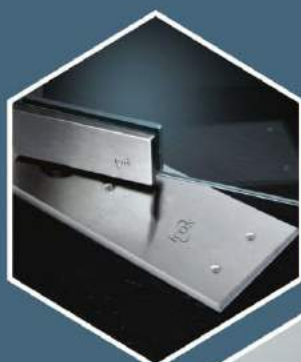


Architectural Hardware

**icon**<sup>TM</sup>

Run with the best .....



**Product Catalogue  
2020**



Run with the best .....

TESTED TO  
**50000**  
**CYCLES**

Floor Hinge



**ICFH-777**  
Single Cylinder Floor Hinge  
Maximum bearing weight-55kgs

- Specification**
- Over 500,000 cycles tested.
  - General design, suitable for left or right hand to open the door in single and both sides.
  - Universal machine cylinder.
  - Closing force-15nm.
  - Maximum wide door leaf-900mm.
  - Maximum bearing weight -55Kgs.
  - Speed covering control-two stage adjustable speed.
  - Location-90° hold open.



**ICFH-8600EH**  
Double Cylinder Floor Hinge  
Maximum bearing weight-90-120kgs

- Specification**
- Over 500,000 cycles tested.
  - General design, suitable for left or right hand to open the door in single and both sides.
  - Universal machine cylinder.
  - Closing force-25nm.
  - Maximum wide door leaf-1100mm.
  - Maximum bearing weight -90-120Kgs.
  - Speed covering control-two stage adjustable speed.
  - Location-90° hold open.



**ICFH-84**  
Single Cylinder Floor Hinge  
Maximum bearing weight-90kgs

- Specification**
- Over 500,000 cycles tested.
  - General design, suitable for left or right hand to open the door in single and both sides.
  - Universal machine cylinder.
  - Closing force-15nm.
  - Maximum wide door leaf-900mm.
  - Maximum bearing weight -90Kgs.
  - Speed covering control-two stage adjustable speed.
  - Location-90° hold open.



**ICFH-9400**  
Double Cylinder Floor Hinge  
Maximum bearing weight-150kgs

- Specification**
- Over 500,000 cycles tested.
  - General design, suitable for left or right hand to open the door in single and both sides.
  - Universal machine cylinder.
  - Closing force-35nm.
  - Maximum wide door leaf-1250mm.
  - Maximum bearing weight -150Kgs.
  - Speed covering control-two stage adjustable speed.
  - Location-90° hold open.



**ICFH-7400**  
Double Cylinder Floor Hinge  
Maximum bearing weight-70kgs

- Specification**
- Over 500,000 cycles tested.
  - General design, suitable for left or right hand to open the door in single and both sides.
  - Universal machine cylinder.
  - Closing force-20nm.
  - Maximum wide door leaf-1100mm.
  - Maximum bearing weight -70Kgs.
  - Speed covering control-two stage adjustable speed.
  - Location-90° hold open.



**ICFH-10400**  
Single Cylinder Floor Hinge  
Maximum bearing weight-270kgs

- Specification**
- Over 500,000 cycles tested.
  - General design, suitable for left or right hand to open the door in single and both sides.
  - Universal machine cylinder.
  - Closing force-35nm.
  - Maximum wide door leaf-1250mm.
  - Maximum bearing weight -270Kgs.
  - Speed covering control-two stage adjustable speed.
  - Location-90° hold open.

**E - Series**



**ICFH-8200**  
Double Cylinder Floor Hinge  
Maximum bearing weight-90kgs

- Specification**
- Over 500,000 cycles tested.
  - General design, suitable for left or right hand to open the door in single and both sides.
  - Universal machine cylinder.
  - Closing force-25nm.
  - Maximum wide door leaf-1100mm.
  - Maximum bearing weight -90Kgs.
  - Speed covering control-two stage adjustable speed.
  - Location-90° hold open.

**Prime series**



**ICFH-1200**  
Double Cylinder Floor Hinge  
Maximum bearing weight-90-120kgs

- Specification**
- Over 10,00,000 cycles tested.
  - General design, suitable for left or right hand to open the door in single and both sides.
  - Universal machine cylinder.
  - Closing force-25nm.
  - Maximum wide door leaf-1100mm.
  - Maximum bearing weight -90-120Kgs.
  - Speed covering control-two stage adjustable speed.
  - Location-90° hold open.

**Hydraulic Floor Hinge**



**ICFH-8400**  
Double Cylinder Floor Hinge  
Maximum bearing weight-90kgs

- Specification**
- Over 500,000 cycles tested.
  - General design, suitable for left or right hand to open the door in single and both sides.
  - Universal machine cylinder.
  - Closing force-25nm.
  - Maximum wide door leaf-1100mm.
  - Maximum bearing weight -90Kgs.
  - Speed covering control-two stage adjustable speed.
  - Location-90° hold open.



**ICFH-100**  
Hydraulic Floor Hinge



**ICPF-102**  
Hydraulic Top Patch

# Door Closer



**ICDC-701**  
Round door closer



**ICDC-702**  
Triangle door closer



**ICDC-703**  
Quadrangle door closer

## Patch Fittings



**ICPL-1**  
Patch Lock



**ICPL-2A**  
Centre Patch Lock



**ICPL-2B**  
Centre Strike Box



**ICPF-2**  
Top Patch



**ICPF-3**  
Bottom Patch



**ICPF-4**  
Over Panel Patch with Pivot



**ICPF-4A**  
Over Panel Pivot Patch  
with Fin for 10mm to 12mm



**ICPF-1**  
Over Panel & Side Panel  
Patch with Pivot (Big L)



**ICPF-1A**  
Over Panel & Side Panel  
Patch without Pivot (Big L)



**ICPF-610**  
Over Panel & Side  
Panel Patch (Small L)



**ICPF-610R & L**  
Over Panel & Side Panel Patch  
(Small L with Right Fin & Left Fin)



**ICPF-610DS**  
Small L with Door Stopper



**ICPF-610DF**  
Small L with Back to Back Fin



**ICPF-620**  
Square Patch (Four  
Glass Connector)



**ICPF-620F**  
Square Patch with Fin  
(Four Glass Connector)



**ICPF-620DF**  
Square Patch  
with Back to Back Fin



**ICPF-650F**  
Two Glass Connector with Fin



**ICPF-640**  
Square Patch  
(Fix Structure/Wall to Glass)



**ICPF-650**  
Glass to Glass Patch Connector  
(Fix Structure/Wall to Glass)



**ICPF-660**  
Center Connector  
(Glass to Glass)



**ICPF-41L**  
Over Panel & Side Panel  
Patch (with Left Fin)



**ICPF-41R**  
Over Panel & Side Panel  
Patch (with Right Fin)



**ICPF-41DF**  
Over Panel & Side Panel  
Patch (with Back to Back Fin)



**ICPF-51**  
Double Over Panel Patch with  
Fin (for Back to Back Door)



**ICPF-51D**  
Double Over Panel Patch  
(for Back to Back Door)



**ICPL-3A**  
Latch Lock



**ICPL-3B**  
Strike Box



**ICWPD-1**  
Accessories for Wooden Doors



**ICMH-3**  
Mini Floor Hinge



**ICGDP-1**  
Top Pivot



**ICGTB**  
Glass Tower Bolt



**ICGDS-1**  
Door Stopper



**ICRA-U25**  
U Channel



## Point Glass Fittings



**ICPPF-2**  
Pivot Pole (Top)



**ICPPF-3**  
Pivot Pole (Bottom)



**ICPPF-4**  
Over Panel Connector  
(Wall Mounting)



**ICPPF-4A**  
Over Panel Connector



**ICPPF-1(L/R)**  
Over Panel & Side  
Panel Connector with Pivot



**ICPPF-610(L/R)**  
Over Panel & Side Panel  
Connector



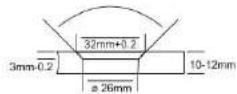
**ICPPF-DST-1**  
Stopper Over Panel



**ICPPF-DST-2**  
Stopper Ceiling Floor Mounted

## Point Fix Glass Connectors

Point connectors with two option of hole cap countersunk and flat.



Wall to Glass Connector- Dimension for Glass Thickness of 10mm  
(for other glass thickness-consider accordingly)

Length of connecting Rod (in mm)			
ANGLE	52.5 (A/B)	60 (A/B)	82 (A/B)
90°	67/65	72/70	87.5/86

Glass to Glass Connector- Dimension for Glass Thickness of 10mm  
(for other glass thickness-consider accordingly)

Length of connecting Rod (in mm)				
ANGLE	52.5 (A/B)	60 (A/B)	82 (A/B)	103 (A/B)
90°	75	80	96	-
95°	70	75	90	-
100°	66	71	85	-
105°	62	67	81	-
110°	59	63	77	-
115°	55	60	73	-
120°	52	56	69	-
125°	49	54	66	-
130°	47	51	63	-
135°	44	48	60	-
180°	-	-	-	50



**ICPC-01**  
Glass to Glass (Adjustable)



**ICPC-02**  
Wall to Glass (Fix)



**ICPC-03**  
Wall to Glass (Adjustable)



**ICPC-04**  
Glass to Glass  
(Adjustable with Fin)



**ICPF-05**  
Key  
Adjustable Fixing Tool Used  
for installations and fastening  
Point fixed glass connectors



# Glass Door Handle



**ICGH-1501**  
Antique Glass Door Handle

Dia	Overall Length	Centre to Centre
38 x	450 x	302
38 x	600 x	450



**ICGH-1502**  
Antique Glass Door Handle

Dia	Overall Length	Centre to Centre
80 x	450 x	302
80 x	600 x	450



**ICGH-1503**  
Antique Glass Door Handle

Dia	Overall Length	Centre to Centre
80 x	450 x	302
80 x	600 x	450



**ICGH-01S/PSS**  
H Type Handle

Dia	Overall Length	Centre to Centre
25 x	325 x	240
25 x	400 x	302
32 x	450 x	302
32 x	600 x	452
32 x	600 x	482
32 x	900 x	600
32 x	900 x	700
32 x	1200 x	900
32 x	1500 x	1200



**ICGH-02S/PSS**  
D Type Handle

Dia	Overall Length	Centre to Centre
25 x	327 x	302
25 x	400 x	375
32 x	450 x	418
32 x	600 x	568



**ICGH-03S/PSS**  
S Type Handle

Dia	Overall Length	Centre to Centre
32 x	450 x	302
32 x	600 x	420



**ICGH-04**

Dia	Overall Length	Centre to Centre
S/PSS 25 x	327 x	302
30 x	484 x	454
TW/PSS 25 x	327 x	302
30 x	484 x	454
30 x	600 x	570



**ICGH-05TW/PSS**

Dia	Overall Length	Centre to Centre
15/30x	350 x	280
25/45x	450 x	302
25/45x	550 x	302
25/45x	800 x	600



**ICGH-06TW/PSS**

Dia	Overall Length	Centre to Centre
38 x	500 x	302



**ICGH-07S/PSS**

Dia	Overall Length	Centre to Centre
25 x	327 x	302
32 x	486 x	484



**ICGH-08**

Dia	Overall Length	Centre to Centre
S/PSS 25 x	400 x	302
32 x	450 x	302
TW/PSS 25 x	400 x	302
32 x	450 x	302



**ICGH-11**  
ADJUSTABLE

Dia	Overall Length	Centre to Centre
32 x	450 x	
32 x	600 x	



Lock with Handle

**ICGH-09**

Dia	Overall Length	Centre to Centre
35 x	1500 x	



Lock with Handle

**ICGH-10**

Dia	Overall Length	Centre to Centre
25 x	1340 x	



**ICGH-12**

Diameter of Handle	Overall Length of Handle
38 x	550
38 x	800



**ICGH-13S/PSS**

Diameter of Handle	Overall Length of Handle
32 x	550



**ICGH-14TW/PSS**

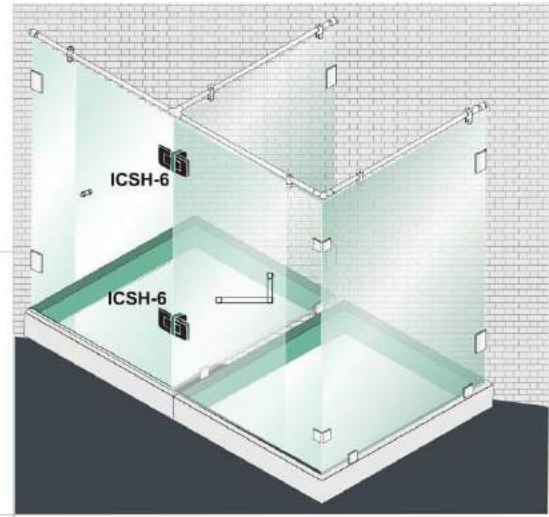
Dia	Overall Length	Centre to Centre
25 x	327 x	302
30 x	484 x	454



Please refer to actual product for glass cutout preparation.

## Commercial Series

<b>ICSH-1</b> Wall to Glass 90° Hinge (Brass/SS)	<b>ICSH-1SP</b> Wall to Glass 90° Corner Hinge (Brass/SS)	<b>ICSH-2</b> Glass to Glass 180° Hinge (Brass/SS)	<b>ICSH-3</b> Glass to Glass 135° Hinge (Brass/SS)
<b>ICSH-4</b> Glass to Glass 90° Hinge (Brass/SS)	<b>ICSH-5</b> Wall to Glass 90° Fixed Bracket (Brass/SS)	<b>ICSH-6</b> Double Glass Hinge Joint with Fixed Glass (Brass/SS)	<b>ICSH-7</b> Pivot Hinge for Floor Ceiling (Steel)



## Curve Series

<b>ICSH-11</b> Wall to Glass 90° Hinge (Brass)	<b>ICSH-11SP</b> Wall to Glass 90° Corner Hinge (Brass)	<b>ICSH-22</b> Glass to Glass 180° Hinge (Brass)	<b>ICSH-33</b> Glass to Glass 135° Hinge (Brass)	<b>ICSH-44</b> Glass to Glass 90° Hinge (Brass)	<b>ICSH-55</b> Wall to Glass 90° Fixed Bracket (Brass)

## Economy Series

<b>ICSH-11ES</b> Wall to Glass 90° Hinge (Stainless Steel)	<b>ICSH-11ES-SP</b> Wall to Glass 90° Corner Hinge (Stainless Steel)	<b>ICSH-22ES</b> Glass to Glass 180° Hinge (Stainless Steel)	<b>ICSH-33ES</b> Glass to Glass 135° Hinge (Stainless Steel)	<b>ICSH-44ES</b> Glass to Glass 90° Hinge (Stainless Steel)	<b>ICSH-55ES</b> Wall to Glass 90° Fixed Bracket (Stainless Steel)

## Black Series

<b>ICSH-1BL</b> Wall to Glass 90° Hinge (Black Matt)	<b>ICSH-1-SP-BL</b> Wall to Glass 90° Corner Hinge (Black Matt)	<b>ICSH-2BL</b> Glass to Glass 180° Hinge (Black Matt)	<b>ICSH-3BL</b> Glass to Glass 135° Hinge (Black Matt)	<b>ICSH-4BL</b> Glass to Glass 90° Hinge (Black Matt)	<b>ICSH-5BL</b> Wall to Glass 90° Fixed Bracket (Black Matt)

## Hydraulic Shower Hinge

<b>ICSH-15-SC</b> (Hydraulic) 90°	<b>ICSH-16-SC</b> (Hydraulic) 180°

(Twist the arrow to the position of desire strength)

Adjust the shaft arrow to the required strength position

## Shower Enclosure

<b>ICALSL-1</b>	<b>ICALSL-2</b>	<b>ICALSL-3</b>	<b>ICALSL-4R</b>	<b>ICALSL-5G</b>

# Plastic Profiles



## Glass Connectors



## Black Series



## Shower Knight Head Accessories



# Shower Knight Head Accessories

## Black Series



Size : 19x171cc 152  
19x248 cc 229

Size : TB-1 (19mm)  
TB-2 (25mm)

**ICGH-19BL**  
Small Door Handle

**ICGH-TB-1BL**  
Towel Bar  
Handle Round



**ICDK-1BL**  
Door Knob



**ICDK-2BL**  
Door Knob



**ICSKH-1BL**  
Wall to Rod



**ICSKH-2BL**  
Glass to Rod



**ICSKH-3BL**  
Rod to Rod (Joiner)



**ICSKH-4BL**  
Glass to Rod (End)



**ICSKH-5BL**  
Rod to Rod  
T-Connector



**ICSKH-ACC-19BL**  
Connecting Tube  
Round (19mm)

## Shower Sliding System

ICSS-400 Set	
ICSS-400	2 Pcs
ICSS-402A	2 Pcs
ICSS-403	2 Pcs
ICSS-404	1 Pc
ICSS-406	2 Pcs
ICSS-410	1 Pc (2 Mtr.)



**ICSS-400**  
Roller

ICSS-401 Set	
ICSS-401	2 Pcs
ICSS-402	2 Pcs
ICSS-402A	2 Pcs
ICSS-403	2 Pcs
ICSS-404	1 Pc
ICSS-406	2 Pcs
ICSS-410	1 Pc (2 Mtr.)



**ICSS-401**  
Sliding Door Roller



**ICSS-402**  
Track to Glass Holder



**ICSS-402A**  
Track Supporter for  
Roller



**ICSS-403**  
Door Stopper



**ICSS-404**  
Floor Guide  
8mm to 10mm Glass



**ICSS-405**  
Plate Type Wall Socket  
for Track



**ICSS-406**  
Wall to Track  
Connector



**ICSS-406G**  
Glass to Track  
Connector



**ICSS-407**  
Track Connector 90°



**ICSS-408**  
Track to Track  
Connector with Glass  
Clamp



**ICSS-FG**  
Floor Guide



**ICSS-409**  
Track Connector  
T-Type



**ICSS-410**  
Shower Sliding Track  
2mtr./3mtr.



**ICRA-U25**  
U Channel



## Corner Entry System



**Wall to Wall  
System**

## Shower Sliding System



**ICSL-AL-1**  
Sliding Roller



**Optional Accessories**  
**ICSL-AL-2**  
Tube Connector



**ICSL-AL-3**  
Alu Rail

### ICSL-AL-1 Set

ICSL-AL-1	2 Pcs
ICSL-AL-3	1 Pc
ICSL-AL-4	2 Pcs
ICSL-AL-5	1 Pc
ICSL-AL-6	2 Pcs



**ICSL-AL-4**  
Stopper



**ICSL-AL-5**  
Floor Guide



**ICSL-AL-6**  
Clip



# Shower Sliding System



**ICSL-11A**  
Shower Sliding Roller



**ICSL-11B**  
Wall to Glass Connector



**ICSL-11C**  
Connector with Stopper



**ICSL-11E**  
Wall to Rod Holder



**ICSL-11F**  
Glass to Rod Holder



**ICSL-11G**  
Rod to Rod Holder



**ICSL-11I**  
PVC Stopper



**ICSL-FG**  
Floor Guide

## Office & Residential Sliding System



**ICSL-LR1**  
Sliding Long Roller



**ICSL-A1**  
Sliding Roller (SS)



**ICSL-A2**  
Sliding Roller



**ICSL-A3**  
Sliding Roller



**ICSL-SCR**  
Soft Closing Rail



**ICSL-A4**  
Track End Cover



**ICSL-A44**  
Curved Track Cover  
(Left & Right)



**ICSL-A5**  
Wall to Track Clamp



**ICSL-A6**  
Glass to Track  
Clamp



**ICSL-ST-A1**  
Stopper



**ICSL-WTC-1B**  
Single Wall to Track  
Connector



**ICSL-LK-W**  
Sliding Door Lock  
(Wall to Glass)



**ICSL-LK-G**  
Sliding Door Lock  
(Glass to Glass)



**ICSL-SH-10**  
Square Sliding Door  
Handle



**ICSL-SH-20**  
Rectangle Sliding Door  
Handle



**ICSL-SH-30**  
Rectangle Sliding Door  
Handle



**ICSL-SH-50**  
Round Sliding Door  
Handle



**ICSL-SH-60**  
Round Sliding Door  
Handle



**ICSL-C1**  
Track for ICSL-A3



**ICSL-B3**  
Aluminium Track (Door+Fix  
Glass) for ICSL-LR1, A1 & A2  
Roller Available in : 2, 3 & 4mtr.



**ICSL-B1**  
Aluminium Track (Single  
for ICSL-LR1, A1 & A2 Roller)  
Available in : 2, 3 & 4mtr.



**ICSL-B2**  
Aluminium Track (Double  
for ICSL-LR1, A1 & A2 Roller)  
Available in : 2, 3 & 4mtr.









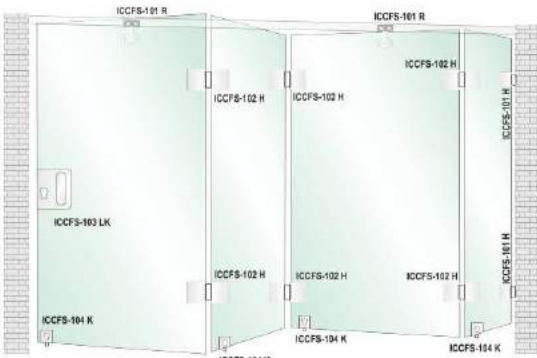




IC33A / 33B SET	
ICSL-33A/33B	2 Pcs
ICSL-33-TH-G2	4 Pcs
ICSL-DS-1(R)	1 Pcs
ICSL-DS-1(L)	1 Pcs
ICSL-FG	1 Pcs

No need to grout in the floor with frameless center folding systems Suitable for Mall, Showrooms, hotels and airport, etc.

## Frameless Center Folding System



Note :-  
 • Maximum weight per door : 70kg  
 • Maximum width per door : 900mm  
 • Maximum height per door : 2500mm  
 • Suitable for 8 to 10mm glass thickness





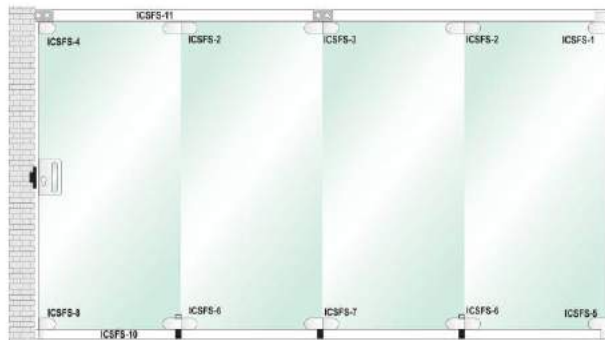




Frameless Center Folding System 4 Door Set	
ICCFS-101 R	2 Pcs
ICCFS-101 H	2 Pcs
ICCFS-102 H	6 Pcs
ICCFS-103 LK	1 Pcs
ICCFS-104 K	4 Pcs
ICCFS-105	1Pcs (3Mtr.)
ICCFS-104 KS	4 Pcs

## Sliding Folding System

Icon Sliding folding system operated on track gives wide opening space with using interlink glass panels.



Sliding Folding System 4 Door Set	
ICSFS-1	1 Pcs
ICSFS-2	2 Pcs
ICSFS-3	1 Pcs
ICSFS-4	1 Pcs
ICSFS-5	1 Pcs
ICSFS-6	2 Pcs
ICSFS-7	1 Pcs
ICSFS-8	1 Pcs
ICSFS-10	1 Pcs (3 Mtr.)
ICSFS-11	1 Pcs (3 Mtr.)





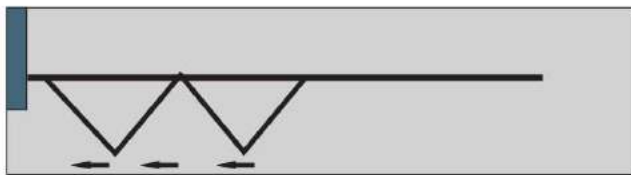









# Glass Folding System



**ICGFS-Z-1**  
Upper fixed door leaf  
(1/2 door leaf+63mm)



**ICGFS-Z-2**  
Lower fixed door leaf  
(1/2 door leaf+63mm)



**ICGFS-Z-3**  
Upper door strip (hinge + roller)



**ICGFS-Z-4**  
Lower door strip  
(hinge + surface bolt)



**ICGFS-Z-5**  
Upper end door leaf  
(1/2 door leaf+63mm)



**ICGFS-Z-6**  
Lower end door leaf  
(1/2 door leaf+63mm)



**ICGFS-C-2**  
Track

### Glass Folding System 4 Door Set

ICGFS-Z-1	1 Pc
ICGFS-Z-2	1 Pc
ICGFS-Z-3	2 Pcs
ICGFS-Z-4	1 Pc
ICGFS-Z-5	1 Pc
ICGFS-Z-6	2 Pcs
ICGFS-C-2	1 Pc 3 Mtr.

# Glass Door Locks



**ICSSL-FP-1**  
Fingerprint Lock  
Wall to Glass

**ICSSL-FP-2**  
Fingerprint Lock  
Glass to Glass



**ICDDL-11 FP STD**  
Digital lock High-End Intelligent Lock



**ICSSL-1**  
Single Door Lock  
(One Side Knob Only)



**ICSSL-2**  
Double Door Lock  
(One Side Knob Only)



**ICSSL-3**  
Single Door Lock  
(One Side Knob Only)



**ICSSL-4**  
Double Door Lock  
(One Side Knob Only)



**ICSSL-5**  
Single Door Lock  
(One Side Knob Only)



**ICSSL-6**  
Double Door Lock  
(One Side Knob Only)



**ICSSL-7**  
Single Door Lock  
(One Side Key  
One Side Knob)



**ICSSL-8**  
Double Door Lock  
(One Side Key  
One Side Knob)



**ICSSL-9**  
Single Door Lock (One Side  
Key One Side Knob)



**ICSSL-9 A**  
Single Door Lock  
(One Side Key Only)



**ICSSL-9 B**  
Single Door Lock  
(Both Side Key)



**ICSSL-10**  
Double Door Lock (One  
Side Key One Side Knob)



**ICSSL-10 A**  
Double Door Lock  
(One Side Key Only)



**ICSSL-10 B**  
Double Door Lock  
(Both Side Key)



**ICSSL-11**  
Single Door Lock  
(One Side Key Only)



**ICSSL-12**  
Double Door Lock  
(One Side Key Only)



**ICSSL-13**  
Sliding Glass Door Lock  
(Glass To Wall/fix Structure  
With Strike Plate)



**ICSSL-13 A**  
Sliding Glass Door Lock (Glass  
To Glass Sliding Lock  
With Strike Box)



**ICGMH-1**  
Wall To Glass Door Lock (Glass  
Door Lock with Mortise Handle)



**ICGMH-1 A**  
Glass Door Lock (Glass to Glass  
Door Lock with Mortise Handle)

## Mortise Lock & Handle



**ICSSL-ID-LKW**  
Bathroom lock Wall to Glass  
With thumb turn indicator



**ICSSL-ID-LKG**  
Bathroom lock Glass to Glass  
With thumb turn indicator



**ICGMH-15**  
Glass Door Lock With  
Mortise Lock & Handle



**ICGMH-16**  
Strike Box with Handle



**ICGMH-17**  
Strike Box



## Spider Fittings



**ICSP-4**  
Four Way Spider (316 Steel)



**ICSP-44**  
Two Way Spider 90°  
(Wall Mounted) 316 Steel



**ICSP-2**  
Two Way Spider 180°  
(316 Steel)



**ICSP-22**  
One Way Spider  
(Wall Mounted) 316 Steel



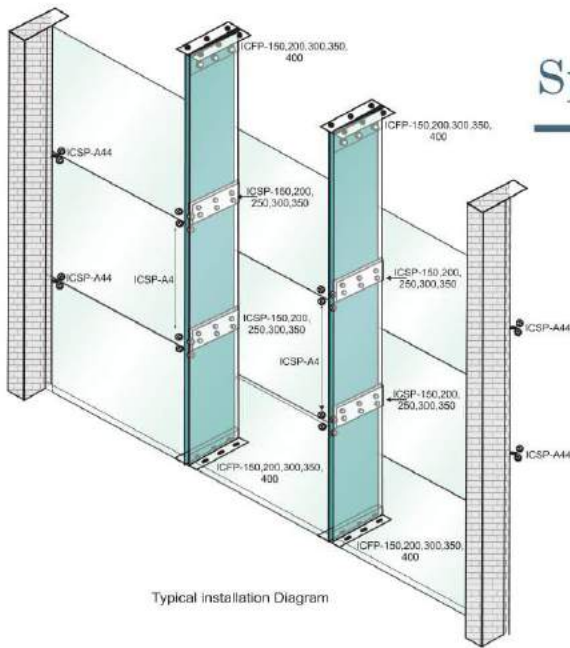
**ICSP-B-1**  
One Way Spider  
without Fin 160mm



**ICSP-B-2-90**  
Two Way Spider 90°  
without Fin 220mm

Run with the best .....

# Spider Fittings



<b>ICSP-B-2-180</b> Two Way Spider 180° without Fin 220mm	<b>ICSP-B3</b> Three Way Spider without Fin 220mm	<b>ICSP-B4</b> Four Way Spider without Fin 220mm	<b>ICSP-B90</b> Four Way Spider without Fin 90°	<b>ICSP-A4</b> Four Way Spider 304Steel	<b>ICSP-A44</b> Two Way Spider 90° (Wall Mounted) 304 Steel
<b>ICSP-A2</b> Two Way Spider 180° 304 Steel	<b>ICSP-A22</b> One Way Spider (Wall Mounted) 304 Steel	<b>ICSP-PHS-4</b> Four Way Spider with Fin (316 Steel)	<b>ICSP-PHS-44</b> Two Way Spider 90° (Wall Mounted) with Fin (316 Steel)	<b>ICSP-PHS-2</b> Two Way Spider 180° with Fin (316 Steel)	<b>ICSP-PHS-22</b> One Way Spider (Wall Mounted) with Fin (316 Steel)

## Articulated Routil

<b>ICSP-AFB-36-FL</b> Articulated Routil (Flat Head) (SS 304/316)	<b>ICSP-AFB-36-CS</b> Articulated Routil (Cunter Sunk Hole)	<b>ICSP-AFB-CS</b> Fixed Routil (Cunter Sunk)	<b>ICSP-AFB-FL</b> Fixed Routil (Flat Head)	<b>ICSP-01</b> Iron Assembly	<b>ICPHS-FB</b> Point Head Routil

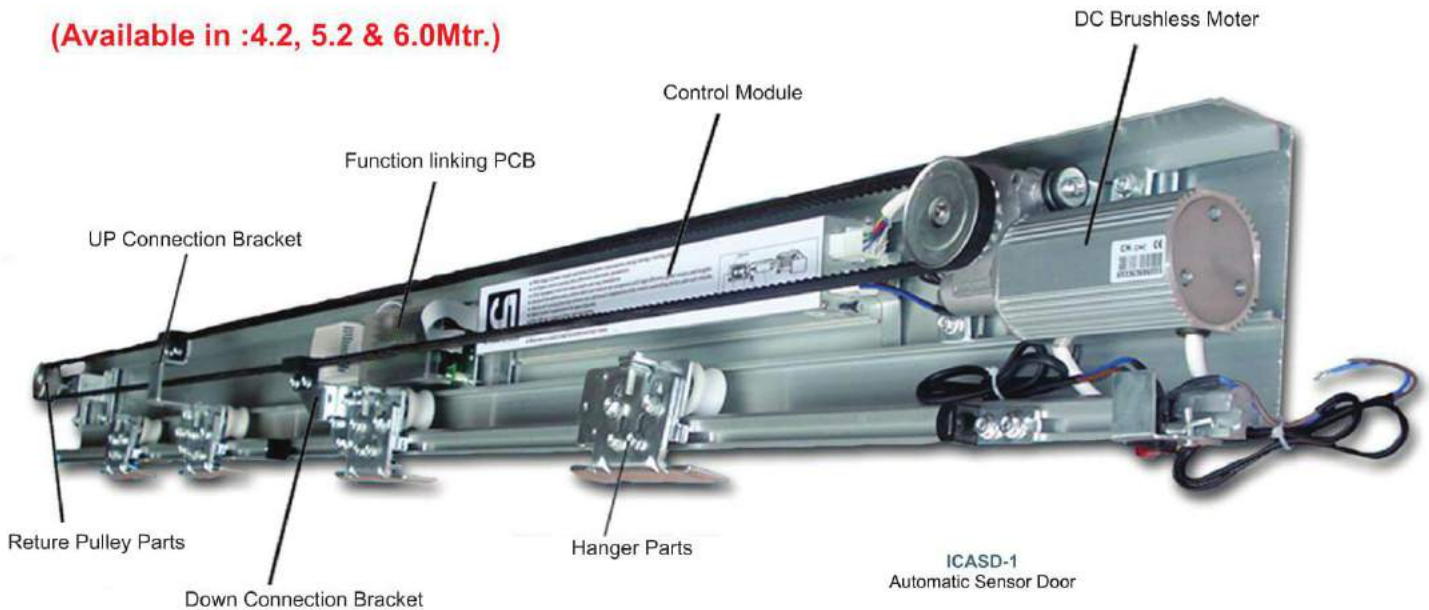
## Fin Plates

<b>ICFP-150</b> Fin Plate (150mm)	<b>ICFP-200</b> Fin Plate (200mm)	<b>ICFP-300</b> Fin Plate (300mm)	<b>ICFP-350</b> Fin Plate (350mm)	<b>ICFP-400</b> Fin Plate (400mm)

## Splice Plates

<b>ICSP-150</b> Splice Plate (150mm)	<b>ICSP-200</b> Splice Plate (200mm)	<b>ICSP-250</b> Splice Plate (250mm)	<b>ICSP-300</b> Splice Plate (300mm)	<b>ICSP-350</b> Splice Plate (350mm)

(Available in :4.2, 5.2 & 6.0Mtr.)



**Motor and Transmission Device**  
The system is Powered with a powerful brushless DC motor, coupled to a precision helical gear reducer, low noise and precise movement transmitted via toothed belt drive.



**Controller**  
The controller module receives motion detection signal from the motion sensor and accordingly drive the motor for precision door Movement.



Tail wheel



Switch



**Hanger Unit**  
The module is equipped with a door round, aluminum in the engine box rail movement, the biggest can carry 150 kg weight of a large door.



Strap

**Belt**  
Toothed belt drive transmission with high efficiency and precision, No need of any adjustments.



Safety Beam



Door Sensor



**Track**  
Made of high-hardness aluminum extruded section can be easily cut to required length to suit the width of the opening.



Door stopper

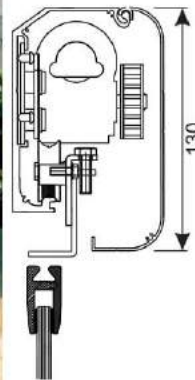
**Floor Guide**  
Use of high-quality steel composition, is free to restrict the net to open the door width, only the bits of rubber can be very slow body impact force.



Glass clamp



Remote



**Specification**

Door Parameter	
Single Leaf Maximum Opening	1200mm x 2400mm
Bi-parting Door Maximum Opening	2200mm x 2400mm
Maximum Door Weight Single Leaf	75kg to 90kg (Single Door)
Maximum Door Weight Double Leaf	75kg x 2 Door (Bi-parting)

**AUTOMATIC DOOR PARAMETER**

TYPE	ICASD-1
Opening Speed	Adjust Between 250-600mm/Sec.
Closing Speed	Adjust Between 150-300mm/Sec.
Holding Time	1-15 Sec.
Pushing Force	<37N <45N
Power	Ac 200-250V
Voltage	DC 24V-50W
Environment Temperature	-200C - +500C

**Features and advantages**

1. Intelligent control system.
2. Drive equipment with low noise.
3. Advanced brushless motor and worm wheel reducer are integrated.
4. Special self-locking function without any addition components.
5. With different triggered opening modes.
6. Double door interlock function.
7. Optional power supply backup to ensure the normal operation.
8. When door is closed, it shall be locked and kept closed.
9. Apply to doors for garage, usage of anti-radiation for hospitals, warehouses, science and technology factories, barrier-free space, commercial building, shopping mall, etc.
10. Easy installation & low maintenance.
11. Track size : 4200mm/6400mm.

Run with the best .....

# Canopy Fittings



**ICCF-1**  
Wall to Glass



**ICCF-2**  
Rod to Glass



**ICCF-3**  
Wall to Rod



**ICCF-11**  
Wall to Glass Connector



**ICCF-22**  
Adjustable Glass  
Connector for ICCF-44



**ICCF-33**  
Wall Connector for  
ICCF-44



**ICCF-44**  
Threaded Sleeve for  
ICCF-66



**ICCF-55**  
Canopy Fitting for  
Two Glass Joiner



**ICCF-66**  
Connecting Rod  
for Canopy (SS 304)

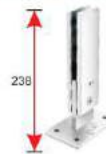


**ICRA-1**  
Floor to Glass  
Holder

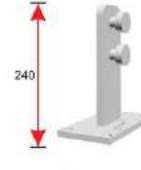
## Railing Accessories



**ICRA-1A**  
Floor to Glass  
Holder



**ICRA-2**  
Floor to Glass  
Holder



**ICRA-2A**  
Floor to Glass  
Holder



**ICRA-2S**  
Floor to Glass  
Holder (Small)



**ICRA-3**  
Floor to Glass  
Holder



**ICRA-4**  
Wall to Track  
Glass Connector



**ICRA-5**  
Wall to Handrail  
Connector



**ICRA-6**  
Glass to Handrail  
Connector



**ICRA-7**  
Glass Connector  
for Baluster with  
Flat Back



**ICRA-8**  
Glass Connector  
for Baluster with  
Round Back



**ICRA-9**  
Wall to Glass  
Holder



**ICRA-9A**  
Wall to Glass  
Holder



**ICRA-9S**  
Wall to glass  
adjustable round  
railing connector



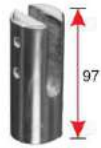
**ICRA-10**  
Wall to Glass  
Holder (Adjustable  
for Glass Hole)



**ICRA-701**  
Floor to Glass  
Holder



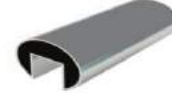
**ICRA-702**  
Floor to Glass  
Holder



**ICRA-703**  
Floor to Glass  
Holder



**ICRA-50**  
Round Slotted Tube



**ICRA-59**  
Oval Slotted Tube



**ICRA-60**  
Square Slotted Tube

## Round Series



**ICRA-50-WLC**  
Wall to Tube  
Connector



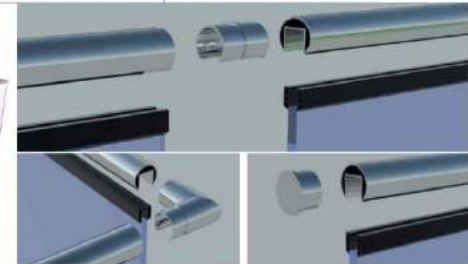
**ICRA-50-90**  
90° Tube to Tube  
Joiner



**ICRA-50-180**  
180° Tube to Tube  
Joiner



**ICRA-50-EC**  
End Cap



## Square Series



**ICRA-60-WLC**  
Wall to Tube  
Connector



**ICRA-60-90**  
90° Tube to Tube  
Joiner



**ICRA-60-180**  
180° Tube to Tube  
Joiner



**ICRA-60-EC**  
End Cap



**ICRA-PR-11**  
Glass Wedge System



## Glass Lifter



**ICGL-2**  
Glass Lifter with  
Two Cups

## Silicone Sealant Gun & Silicone



**ICGL-2H**  
Glass Lifter with  
Two Cups (Heavy)



**ICGL-3**  
Glass Lifter with  
Three Cups



**ICGL-3H**  
Glass Lifter with  
Three Cups (Heavy)



**ICGL-H**  
Glass Lifter with  
Handle



**ICSG-1201**  
Silicone Gun



**ICSG-1202**  
Silicone Gun



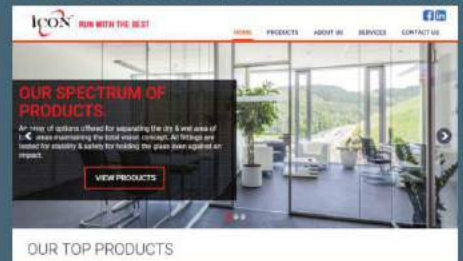
**ICSG-1203**  
Silicone Gun



Scan  
QR Code  
to Access  
Website



To know more about icon products please log on to  
[www.iconmetal.co.in](http://www.iconmetal.co.in)



[icon\\_metal@yahoo.in](mailto:icon_metal@yahoo.in)

Product photos shown in catalogue are only the visual and may be differ from original. The technical presentation and dimension in illustrations and drawings shown are for reference only. Pls. refer the original product for toughen glass cutout. Since our product range upgraded frequently for continuous improvement, please feel free to contact us for any further information.